

Name of work: Construction of Godown for Poul Agro Producer Company Limited at Farkanda Tq. Palam Dist.Parbhani

Fund Head Sheet

Division	Z.P. W. WORKS DIVISION PARBHANI
Sanctioned Estimate No.	_____
Fund Head	_____
Major Head	_____
Minor Head	_____
Service Head	_____
Departmental Head	_____

Estimate framed in the office of the Executive Engineer Z.P.W. Division Parbhani that will be incurred for the work of

Name of work: Construction of Godown for Poul Agro Producer Company Limited at Farkanda Tq. Palam Dist.Parbhani

Total Cost of Work : 4431000.00

Administratively approved under No.

Dated _____

Technically Sanctioned under No.

Dated _____

Estimate Prepared By


Eng. _____

(Sec. Engineer)

and Checked By

Engr. _____

(Call of Authority)


Er. Kadam Arun V.
Consulting Engineer
PMC, Parbhani.

No. DDMC/R/2021/APL/00247



Name of work: Construction of Godown for Poul Agro Producer
Company Limited at Farkanda Tq. Palam Dist. Parbhani

SSR-2021-22

GENERAL ABSTRACT

SR.NO	ITEM OF WORK	Amount
1	COST OF RESIDENTIAL BUILDING	RS 3852222.00
2	ADD 12 % FOR GST Charges	RS 462267.00
3	ADD 1 % FOR SQM Charges	RS 38522.00
4	ADD 1% FOR TECHNICAL SANCTION CHARGES	RS 38522.00
5	ADD 1 % FOR LABOUR INSURANCE	RS 38522.00
6	ADD FOR CONTANGIENCY	RS 945.00
	TOTAL AMOUNT	RS 4431000.00

(Adam)

Er. Kadam Arun V.
Consulting Engineer
PMC, Parbhani.
Reg. No. DDMC/R/2021/APL/00247



me of work: Construction of Godown for Poul Agro Producer Company Limited at
 anda Tq. Palam Dist.Parbhani

ABSTRACT

DESCRIPTION OF ITEM	QTY	RATE	UNIT	TOTAL AMOUNT
Excavation for foundation in earth, soil of all types, sand, gravel and soft murum, including removing the excavated material up to a distance of 50 m. beyond the building area and stacking and spreading as directed, dewatering, preparing the bed for the foundation and necessary back filling, ramming, watering including shoring and strutting etc. complete. (Lift upto 1.5 m.) By Mechanical Means I no 21.02	57.38	193.00	Cum.	11074.34
Excavation for foundation in earth, soils of all types, sand,gravel and soft murum, including removing the excavated material upto a distance of 50 metres beyond the building area and stacking and spreading as directed, dewatering, preparing the bed for the foundation and necessary back filling, ramming, watering including shoring and strutting etc. complete. (Lift from 1.5m to 3.0m) By Mechanical Means I no 21.04	11.48	241.00	Cum.	2766.68
Providing and filling in the foundation with sand of approved quality including watering, compacting etc. complete. (To be executed with prior approval of Superintending Engineer) I no 21.39	11.48	2234.46	Cum.	25651.60
Providing dry/ trap/ granite/ quartzite/ gneiss rubble stone soling 15 cm to 20 cm thick including hand packing and compacting etc. complete) I no 21.38	78.04	1810.75	Cum.	141310.93
Providing and laying Cast in situ/Ready Mix cement concrete in M-10 of trap/ granite/ quartzite/ gneiss metal for foundation and bedding including bailing out water, formwork, laying/pumping, compacting, roughening them if special finish is to be provided, finishing if required and curing complete. with fully automatic micro processor based PLC with SCADA enabled reversible Drum Type mixer/concrete Batch mix plant (Pan mixer) etc. complete. With natural sand/V.S.I. quality Artificial Sand I no 24.01	55.34	6191.66	Cu.M.	342646.46
Providing and laying in situ cement concrete M -30 with tremix treatment for 200 mm thickness for Concrete Road is including laying plastic sheet for 125 micron thickness with groove cutting of 4 mm wide and 20 mm deep with necessary refilling with bitumen (excluding reinforcement) with coarse and fine aggregate (natural sand/ VSI grade finely washed crushed sand) etc. complete † no 5.22	27.57	8046.49	Cum.	221841.73
Providing and laying in situ/Ready Mix cement concrete M-20 of trap / granite /quartzite/ gneiss metal for R.C.C. work in foundations like raft, strip foundations, grillage and footings of R.C.C. columns and steel stanchions etc. including bailing out water, formwork, laying/pumping cover blocks, compaction and curing roughening the surface if special finish is to be provided (Excluding reinforcement and structural steel) etc. complete. with fully automatic micro processor based PLC with SCADA enabled reversible Drum Type mixer/ concrete Batch mix plant (Pan mixer) etc. complete. With natural sand/V.S.I. quality Artificial Sand I no 25.11	9.79	6997.12	Cum.	68515.80



ABSTRACT

DESCRIPTION OF ITEM	QTY	RATE	UNIT	TOTAL AMOUNT
Providing and laying Cast in situ/Ready Mix cement concrete M-20 of trap / granite /quartzite/ gneiss metal for R.C.C. columns as per detailed designs and drawing or as directed including centering, formwork, cover blocks, laying/pumping, compaction finishing the formed surfaces with cement mortar 1:3 of sufficient minimum thickness to give a smooth and even surface or roughening if special finish is to be provided and curing etc. complete.(Excluding reinforcement and structural steel).with fully automatic micro processor based PLC with SCADA enabled reversible Drum Type mixer/ concrete Batch mix plant (Pan mixer) etc. complete. With natural sand/V.S.I. quality Artificial Sand I no 25.31	12.30	13339.24	Cum.	164104.67
Providing and laying Cast in situ/Ready Mix cement concrete M-20 of trap / granite /quartzite/ gneiss metal for R.C.C. beams and lintels as per detailed designs and drawings or as directed including centering, formwork, cover blocks, laying/pumping, compactionand roughening the surface if special finish is to be provided and curing etc. complete. (Excluding reinforcement and structural steel). with fully automatic micro processor based PLC with SCADA enabled reversible Drum Type mixer/ concrete Batch mix plant (Pan mixer) etc. complete. With natural sand/V.S.I. quality Artificial Sand I no 25.5	1.16	14274.12	Cum.	16557.98
Filling in plinth and floors with contractors material/brought from outside and approved by Engineer incharge in layers of 15 cm to 20 cm including watering and compaction etc. complete. I no 21.37	124.07	770.06	Cum.	95541.34
Providing second class Burnt Brick masonry with conventional/ I.S. type bricks in cement mortar 1:6 in foundations and plinth of inner walls/ in plinth external walls including bailing out water manually , striking joints on unexposed faces, raking out joints on exposed faces and watering etc. Complete. I no 27.01	9.49	7894.54	CUM	74897.63
Providing second class Burnt Brick masonry with conventional/ I.S. type bricks in cement mortar 1:6 in superstructure including striking joints, raking out joints, watering and scaffolding etc. Complete I no 27.05	85.01	8207.90	Cum.	697757.40
Providing and fixing in position 'J.M.T' - FE - 500 bar reinforcement of various diameters for R.C.C. pile caps, footings, foundations, slabs, beams columns, canopies, staircase, newels, chajjas, lintels pardis, copings, fins, arches etc. as per detailed designs, drawings and schedules. including cutting, bending, hooking the bars, binding with wires or tack welding and supporting as required complete. I no 26.33	3.39	71965.27	M.T.	243962.27



ABSTRACT

DESCRIPTION OF ITEM	QTY	RATE	UNIT	TOTAL AMOUNT
<p>Providing and fixing rolling shutter fabricated from steel laths of minimum thickness 0.9 mm with lock plate of 3.15 mm thickness reinforced with 35 x 35 x 5 mm angle section fitted with sliding bolts and handles for both sides, deep M.S. channel section of depth and thickness not less than 65 mm and 3.15 mm respectively with hold fast arrangements, M.S. Bracket plate 300 x 300 x 3.15 mm minimum size and shape with square bar, suspension shaft of minimum 32 mm diameter, hood cover of M.S. sheet not less than 0.9 mm thickness and of any size at top and safety devices including mechanical gear operation arrangement consisting of worm gear wheels and worms of high grade cast iron or mild steel and one coat of red lead primer etc. complete. (I.S. 62481979) (Without mechanical gear). I no 39.24</p>	5.25	4310.00	SQM	22627.50
<p>Providing and fixing mild steel grill work for windows, ventilators etc. 20 Kilogram/Square Metre as per drawing including fixtures, necessary welding and painting with one coats of anticorrosive paint and two coats of oil painting complete). I no 40.01</p>	10.92	1845.00	SQM	20147.40
<p>Providing and fixing in position powder coated aluminium louvered windows / ventilator of various sizes with powder coating as per detailed drawing and specifications including aluminium frames 80 x 38 mm x 1.22 mm box type, 5 mm thick sheet glass louvers, of approved quality etc. complete.). I no 39.68</p>	10.92	3107.00	SQM	33928.44
<p>Providing structural steel work of rectangular hollow steel section for steel trusses, other similar trussed items like purlin and members with all bracing, gusset plates etc. as per detailed designs and drawings or as directed including cutting, fabricating, hoisting, erecting, fixing in position making riveted/bolted/ welded connections and one coat of anticorrosive paint and over it two coats of oil painting of approved quality and shade complete..). I no 23.11</p>	3.54	102181.27	M.T	361461.13
<p>Providing and fixing colour coated Zincalume (R) AZ150 (min 150 gms/sqm. total on each side) profiled sheets for roofing. The feed material is manufactured out of nominal 0.45 mm Base Metal Thickness (BMT) (0.5 mm TCT), Hi-strength steel with min.550 MPa yield strength, metallic hot dip coated with Aluminium-Zinc alloy (55% aluminium 43.4% zinc 1.6% silicon) with COLORBOND (R) steel quality super durable polyester paint coat (with inorganic pigment). The paint shall have a total coating thickness of nominal 35 um, comprising of nominal 25 um exterior coat on top surface and nominal 10 um reverse coat on back surface. Profile sheet shall have nom. 950-1050 mm effective cover width and nominal 25-30 mm deep ribs with subtle square fluting in the five pan at nominal 180-250 mm center-to-center. The end rib shall be designed for anti-capillary groove. and return leg. The feed material should have coil manufacturers product details marked a regular interval. Including fasteners with min. fastened with min. 25 um Zinc-Tin alloy coated, Hex head, self-drilling screw etc. complete. (weight of profile 4.52 Kilogram/Square Metre)). I no 38.34</p>	334.22	1095.00	SQM	365975.28
<p>Providing internal cement plaster 20mm thick in two coats in cement mortar 1:4 without neer finish, to concrete, brick surface, in all positions including scaffolding and curing etc.complete. I no 32.07</p>	482.04	412.63	Sqm.	198904.17



ABSTRACT

DESCRIPTION OF ITEM	QTY	RATE	UNIT	TOTAL AMOUNT
Providing sand faced plaster externally in cement mortar using approved screened sand, in all positions including base coat of 15 mm thick in cement mortar 1:4 using waterproofing compound at 1kilogramper cement bag curing the same for not less than 2 days and keeping the surface of the base coat rough to receive the sand faced treatment 6 to 8 mm thick in cement mortar 1:4 finishing the surface by taking out grains and curing for fourteen days scaffolding etc.complete. I no 32.11	410.82	615.65	Sqm.	252918.25
Providing and applying two coats of lead/zinc base oil paint/ bituminous paint of approved colour to new structural steel work and iron work in buildings including scaffolding if necessary, cleaning and preparing the surface etc. complete. (excluding primer coat). I no 35.04	15.16	85.00	Sqm.	1288.60

Providing and applying priming coat on concrete/ masonry/ Asbestos Cement plastered surfaces including scaffolding if necessary, preparing the surface by thoroughly cleaning oil, grease, dirt and other foreign matter and sand papering as required etc. complete.). I no 35.21	892.86	34.00	Sqm.	30357.07
Providing and applying plastic emulsion paint of approved quality, colour and shade to old and new surfaces in two coats including scaffolding, preparing the surface. (excluding the primer coat)etc. complete..). I no 36.12	892.86	70.00	Sqm.	62499.85
Providing and Fixing Turbo Ventilator of dia 24"SSR page no.374 item no.42	6.00	10416.00	NOS	62496.00
Providing and fixing board displaying information, such as 'Name of work, Tender cost, Name of Contractor, Work completion and liability period etc', having rectangular shape of 1.20m x 0.90m size made out 18 gauge (1.25mm) thick mild steel sheet painted with one coat of Zinc chromate stoving primer and two coats of enamel paint on front side and	1.00	9284.0	NOS	9284.00

TOTAL COST OF WORK Rs. 3729846.52

QUALITY CONTROL CHARGES				
M-20 CONCRETE CUBE	2.00	690.00	PER NOS	1380.00
BRICK	1.00	2175.00	PER NOS	2175.00
ROYLTY CHARGES				118820.00

TOTAL AMOUNT RS 3852222.00

Kadam

Er. Kadam Arun V.

Consulting Engineer
PMC, Parbhani.

Reg. No. DDMC/R/2021/APL/00247



**Name of work: Construction of Godown for Poul Agro Producer Company
Limited at Farkanda Tq, Palam Dist. Parbhani**

ROYALTY STATEMENT

S/R NO	DESCRIPTION OF ITEMS	NO	QTY	RATE	UNIT	AMOUNT
3	Providing and filling in the foundation with sand of approved quality including watering,	1.00	11.48	237.37	CuM	2725.00
4	Providing dry/ trap/ granite/ quartzite/ gneiss rubble stone soling 15 cm to 20 cm thick	1.00	78.04	216.18	CuM	16871.00
5	Providing and laying Cast in situ/Ready Mix cement concrete in M-10 of trap/ granite/ quartzite/ gneiss metal for foundation and bedding including bailing out	0.47	55.34	237.37	CuM	6174.00
		0.70	55.34	216.18	CuM	8374.00
6	Providing and laying in situ cement concrete M -30 with tremix treatment for 200 mm thickness for Concrete Road is including laying plastic sheet for 125	0.425	27.57	237.37	CuM	2781.00
7	Providing and laying in situ/Ready Mix cement concrete M-20 of trap / granite /quartzite/ gneiss metal for R.C.C. work in foundations like raft, strip	0.425	9.79	237.37	CuM	988.00
8	Providing and laying Cast in situ/Ready Mix cement concrete M-20 of trap / granite /quartzite/ gneiss metal for R.C.C. columns as per detailed designs and drawing	0.425	12.30	237.37	CuM	1241.00
9	Providing and laying Cast in situ/Ready Mix cement concrete M-20 of trap / granite /quartzite/ gneiss metal for R.C.C. beams and lintels as per detailed designs and	0.425	17.04	237.37	CuM	1719.00
10	Providing and laying Cast in situ/Ready Mix cement concrete M-20 of trap/ granite / quartzite/ gneiss metal for R.C.C. slabs and landings as per detailed designs	0.425	1.16	237.37	CuM	117.00
11	Filling in plinth and floors with contractors material/brought from outside and approved by Engineer incharge in layers of 15 cm to 20 cm	1.00000	124.07	216.18	CuM	26821.00
12	Providing second class Burnt Brick masonry with conventional/ I.S. type bricks in cement mortar 1:6 in foundations and plinth of inner walls/ in plinth external	0.320	9.49	237.37	CuM	721.00
13	Providing second class Burnt Brick masonry with conventional/ I.S. type bricks in cement mortar 1:6 in superstructure including striking joints, raking out	0.320	85.01	237.37	CuM	6457.00
20	Providing internal cement plaster 20mm thick in two coats in cement mortar 1:4 without neeru finish, to concrete, brick surface. in all positions including	0.170	482.04	237.37	SqM	19452.00
21	Providing sand faced plaster externally in cement mortar using approved screened sand, in all positions including base coat of 15 mm thick in cement mortar 1:4 using waterproofing compound at 1Kilogramper	0.25	410.82	237.37	SqM	24379.00
TOTAL AMOUNT						118820

Aradam

Er. Kadam Arun V.
Consulting Engineer

PMC, Parbhani,
APPL/00247

Req No. DDMC/R/2021/APPL/00247

MEASUREMENT SHEET.

Description	No.	L	B	D	QUANTITY
Item No. 1					
excavation for foundation in earth, soil of all types, sand, gravel and soft murum, including removing the excavated material to a distance of 50 m. beyond the building area and stacking and spreading as directed, dewatering, preparing the bed for foundation and necessary back filling, ramming, watering including shoring and strutting etc. complete. (Lift upto 1.5 m) By Mechanical Means I no 21.02					
C	17	1.50	1.50		1.50 = 57.38 Cum
					<u>Total = 57.38 Cum.</u>
Item No. 2					
excavation for foundation in earth, soils of all types, sand, gravel and soft murum, including removing the excavated material to a distance of 50 metres beyond the building area and stacking and spreading as directed, dewatering, preparing the bed for the foundation and necessary back filling, ramming, watering including shoring and strutting etc. complete. (Lift from 0.5m to 3.0m) By Mechanical Means I no 21.04					
C	17	1.50	1.50		0.30 = 11.48 Cum
					<u>Total = 11.48 Cum.</u>
Item No. 3					
providing and filling in the foundation with sand of approved quality including watering, compacting and c. complete. (To be executed with prior approval of Superintending Engineer) I no 21.39					
C	17	1.50	1.50		0.30 = 11.48 Cum
					<u>Total = 11.48 Cum.</u>
Item No. 4					
providing dry/ trap/ granite/ quartzite/ gneiss rubble stone soling 15 cm to 20 cm thick including hand packing and compacting etc. complete) I no 21.38					
C	17	1.50	1.50		0.30 = 11.48 Cum
HALL	1	18.32	15.05		0.20 = 55.14 Cum
					<u>Total = 78.04 Cum.</u>
Item No. 5					
providing and laying Cast in situ/Ready Mix cement concrete in M-10 of trap/ granite/ quartzite/ gneiss metal for foundation and bedding including bailing out water, formwork, laying/pumping, compacting, roughening them if special finish is to be provided, finishing if required and curing complete, with fully automatic micro processor based PLC with SCADA enabled reversible Drum Type mixer/concrete Batch mix plant (Pan mixer) etc. complete. With natural sand/V.S.I. quality Artificial and I no 24.01					
BELOW FOOTING					
C	17	1.50	1.50		0.20 = 7.65 CUM
HALL	1	18.32	15.05		0.15 = 41.36 CUM
PLINTH PROTECTION	2	19.52	0.90		0.10 = 3.51 Cum.
	2	15.65	0.90		0.10 = 2.82 Cum.
					<u>Total = 55.34 CUM</u>
Item No. 6					
providing and laying in situ cement concrete M -30 with tremix treatment for 200 mm thickness for Concrete Road is including laying plastic sheet for 125 micron thickness with groove cutting of 4 mm wide and 20 mm deep with necessary filling with bitumen (excluding reinforcement) with coarse and fine aggregate (natural sand VSI grade finely washed crushed sand) etc. complete I no 5.22					
HALL	1	18.32	15.05		0.10 = 27.57 CUM
					<u>Total = 27.57 Cum.</u>

OR FLOORING

MEASUREMENT SHEET.

Description	No.	L	B	D	QUANTITY
Item No. 7 Providing and laying in situ/Ready Mix cement concrete M-20 of trap / granite /quartzite/ gneiss metal for R.C.C. work Providing and laying in situ/Ready Mix cement concrete M-20 of trap / granite /quartzite/ gneiss metal for R.C.C. work foundations like raft, strip foundations, grillage and footings of R.C.C. columns and steel stanchions etc. including filling out water. formwork, laying/pumping cover blocks. compaction and curing roughening the surface if special finish is be provided (Excluding reinforcement and structural steel) etc. complete, with fully automatic micro processor based PLC th SCADA enabled reversible Drum Type mixer/ concrete Batch mix plant (Pan mixer) etc. complete. With natural nd/V.S.I. quality Artificial Sand I no 25.11	1	17	1.20	1.20	0.40 = 9.79 Cum.
DR FLOORING					Total = 9.79 Cum.

Item No.8
Providing and laying Cast in situ/Ready Mix cement concrete M-20 of trap / granite /quartzite/ gneiss metal for R.C.C.
columns as per detailed designs and drawing or as directed including centering, formwork, cover blocks, laying/pumping,
impaction finishing the formed surfaces with cement mortar 1:3 of sufficient minimum thickness to give a smooth and
en surface or roughening if special finish is to be provided and curing etc. complete.(Excluding reinforcement and
structural steel).with fully automatic micro processor based PLC with SCADA enabled reversible Drum Type mixer/
ncrete Batch mix plant (Pan mixer) etc. complete. With natural sand/V.S.I. quality Artificial Sand I no 25.31

Column	C1,C2	10	0.30	0.45	6.85	=	9.25 Cum.
	C3	4	0.30	0.34	6.85	=	2.79 Cum.
	C4	1	0.15	0.34	5.10	=	0.26 Cum.
	CP	2	0.57	0.30	1.70	=	0.58 Cum.
	Total						12.30 Cum.

Item No. 9
Providing and laying Cast in situ/Ready Mix cement concrete M-20 of trap / granite /quartzite/ gneiss metal for R.C.C.
ams and lintels as per detailed designs and drawings or as directed including centering, formwork, cover blocks,
ying/pumping. compaction and roughening the surface if special finish is to be provided and curing etc. complete.
cluding reinforcement and structural steel). with fully automatic micro processor based PLC with SCADA enabled
versible Drum Type mixer/ concrete Batch mix plant (Pan mixer) etc. complete. With natural sand/V.S.I. quality Artificial
nd I no 25.5

Lint Beam							
	GB	4	4.32	0.34	0.45	=	2.64 Cum.
	GB	3	4.35	0.34	0.45	=	2.00 Cum.
	GB	4	4.82	0.34	0.45	=	2.95 Cum.
	GB	2	4.75	0.34	0.45	=	1.45 Cum.
	GB	1	3.78	0.34	0.45	=	0.58 Cum.
	S/B	1	1.12	0.34	0.45	=	0.17 Cum.
VENTILATORS	V1	7	0.60	0.60	0.15		0.38 Cum.
	V2	14	1.00	0.60	0.15		1.26 Cum.
	RS	1	2.10	2.50	0.15		0.79 Cum.
DOOR BEAMS	PB	4	4.32	0.23	0.30	=	1.19 Cum.
	PB	4	4.35	0.23	0.30	=	1.20 Cum.
	PB	4	4.82	0.23	0.30	=	1.33 Cum.
	PB	2	4.75	0.23	0.30	=	0.66 Cum.
INTEL. BEAM	L/B	1	4.35	0.34	0.30	=	0.44 Cum.
	Total						17.04 Cum.



MEASUREMENT SHEET.

Description	No.	L	B	D	QUANTITY
-------------	-----	---	---	---	----------

Item No.10

Providing and laying Cast in situ/Ready Mix concrete M-20 of trap/ granite / quartzite/ gneiss metal for R.C.C. slabs and landings as per detailed designs and drawings including centering, formwork, cover blocks, laying/pumping, compaction/finishing the formed surfaces with cement mortar 1:3 of sufficient minimum thickness to give a smooth and even surface or roughening if special finish is to be provided and curing etc. complete.(Excluding reinforcement and structural steel) with fully automatic micro processor based PLC with SCADA enabled reversible Drum Type mixer/ concrete Batch mix plant (Pan mixer) etc. complete. With natural sand/V.S.I. quality Artificial Sand I no 25.7

ENTRANCE SLAB

	1	5.37	1.80	0.120	=	1.16 CUM
Total =						1.16 Cum.

Item No. 11

filling in plinth and floors with contractors material/brought from outside and approved by Engineer incharge in layers of 5 cm to 20 cm including watering and compaction etc. complete. I no 21.37

ALL	1	18.32	15.05	0.45	=	124.07 Cum.
Total =						124.07 Cum.

Item No. 12

Providing second class Burnt Brick masonry with conventional/ I.S. type bricks in cement mortar 1:6 in foundations and plinth of inner walls/ in plinth external walls including bailing out water manually , striking joints on unexposed faces, raking out joints on exposed faces and watering etc. Complete. I no 27.01

FOR PLINTH

GB	4	4.32	0.23	0.65	=	2.58 Cum.
GB	4	4.35	0.23	0.65	=	2.60 Cum.
GB	4	4.82	0.23	0.65	=	2.88 Cum.
GB	2	4.75	0.23	0.65	=	1.42 Cum.
Total =						9.49 CUM

Item No. 13

Providing second class Burnt Brick masonry with conventional/ I.S. type bricks in cement mortar 1:6 in superstructure including striking joints, raking out joints, watering and scaffolding etc. Complete I no 27.05

FOR

UPPERSTRUCTURE	4	4.32	0.23	4.85	=	19.28 Cum.
GB	3	4.35	0.23	4.85	=	14.56 Cum.
GB	4	4.82	0.23	4.85	=	21.51 Cum.
GB	2	4.75	0.23	4.85	=	10.60 Cum.
GB	1	1.12	0.23	4.85	=	1.25 Cum.
TRIANGULAR PORTION	4	15.70	0.23	2.55	=	18.42 Cum.
MUNDHARI	4	8.25	0.23	0.30	=	2.28 Cum.
Total =						87.88 Cum.

DEDUCTIONS

ENTILATORS	V1	7	0.60	0.60	0.15	0.38 Cum.
V2	14	1.00	0.60	0.15	1.26 Cum.	
RS	1	2.10	2.50	0.15	0.79 Cum.	
INTEL. BEAM	1/1/3	1	4.35	0.34	0.300 =	0.44
Total =						2.87 Cum.
Net Total =						85.01 Cum.

Item No. 14



MEASUREMENT SHEET.

Description	No.	L	B	D	QUANTITY
Providing and fixing in position TMT - F11 - 500 bar reinforcement of various diameters for R.C.C. pile caps, footings, foundations, slabs, beams columns, canopies, staircase, newels, chajjas, lintels partisi, copings, fins, arches etc. as per detailed designs, drawings and schedules, including cutting, bending, hooking the bars, binding with wires or tack welding and supporting as required complete. I no 26.33					
Footing		9.79	@	50 =	489.600 Kg.
Column		12.30	@	95 =	1168.728 Kg.
Beam		17.04	@	95 =	1618.940 Kg.
Slab		1.16	@	95 =	110.200 Kg.
					3387.47 Kg.
		3387.5 /	1000 =		3.39 M.T.

Item No. 15

Providing and fixing rolling shutter fabricated from steel laths of minimum thickness 0.9 mm with lock plate of 3.15 mm thickness reinforced with 35 x 35 x 5 mm angle section fitted with sliding bolts and handles for both sides, deep M.S. channel section of depth and thickness not less than 65 mm and 3.15 mm respectively with hold fast arrangements, M.S. lock plate 300 x 300 x 3.15 mm minimum size and shape with square bar, suspension shaft of minimum 32 mm diameter, hood cover of M.S. sheet not less than 0.9 mm thickness and of any size at top and safety devices including mechanical gear operation arrangement consisting of worn gear wheels and worms of high grade cast iron or mild steel and a coat of red lead primer etc. complete. (I.S. 62481979) (Without mechanical gear). I no 39.24

Item No. 16

UNITTER 1 2.10 2.50 5.25 SQM

Total = 5.250 SQM

Providing and fixing mild steel grill work for windows, ventilators etc. 20 Kilogram/Square Metre as per drawing including frames, necessary welding and painting with one coats of anticorrosive paint and two coats of oil painting complete). I no 40.01

Item No. 17

VENTILATORS V1 7 0.60 0.60 2.52 Cum.
V2 14 1.00 0.60 8.40 Cum.

Total = 10.920 SQM

Providing and fixing in position powder coated aluminium louvered windows / ventilator of various sizes with powder painting as per detailed drawing and specifications including aluminium frames 80 x 38 mm x 1.22 mm box type, 5 mm thick sheet glass louvers, of approved quality etc. complete.). I no 39.68

VENTILATORS V1 7 0.60 0.60 2.52 Cum.
V2 14 1.00 0.60 8.40 Cum.

Total = 10.920 SQM



MEASUREMENT SHEET.

Description	No.	L	B	D	QUANTITY
-------------	-----	---	---	---	----------

Item No. 18

Providing structural steel work of rectangular hollow steel section for steel trusses, other similar trussed items like grillin and members with all bracing, gusset plates etc. as per detailed designs and drawings or as directed including cutting, fabricating, hoisting, erecting, fixing in position making riveted/bolted/ welded connections and one coat of anticorrosive paint and over it two coats of oil painting of approved quality and shade complete.). I no 23.11

FOR TRUSS

WT OF 50MM X50MM X6MM @4.50Kg/M

TRIANGLE DOUBLE	25	17.3			= 432.5
RECTICAL	13	4.3			= 55.9
ROSS	15	8.82			= 132.3
URLIN	20	8			= 160
OR PLATFORM	1	5.4			= 5.4

LENGTH OF ONE TRUSS

1	786.1	4.5	= 3537.45
		<u>4.5</u>	<u>= 3537.45</u>
		= 3.53745	M.T

Item No. 19

Providing and fixing colour coated Zincalume (R) AZ150 (min 150 gms/sq.mt. total on each side) profiled sheets for roofing. The feed material is manufactured out of nominal 0.45 mm Base Metal Thickness (BMT) (0.5 mm TCT), High strength steel with min. 550 MPa yield strength, metallic hot dip coated with Aluminium-Zinc alloy (55% aluminium 43.4% fine 1.6% silicon) with COLORBOND (R) steel quality super durable polyester paint coat (with inorganic pigment). The paint shall have a total coating thickness of nominal 35 um, comprising of nominal 25 um exterior coat on top surface and nominal 10 um reverse coat on back surface. Profile sheet shall have nom. 950-1050 mm center- to-center. The end rib shall be 5-30 mm deep ribs with subtle square fluting in the five pan at nominal 180-250 mm center- to-center. The end rib shall be designed for anti capillary groove. and return leg. The feed material should have coil manufacturers product details marked regular interval. Including fasteners with min. fastened with min. 25 um Zinc-Tin alloy coated, Hex head, self-drilling screw etc. complete. (weight of profile 4.52 Kilogram/Square Metre)). I no 38.34

Roof	2	8.55	18.98	374.56 SQM
Platform	1	5.37	1.80	9.67 SQM
Total =			334.224 SQM	

Item No. 20

Providing internal cement plaster 20mm thick in two coats in cement mortar 1:4 without neera finish, to concrete, brick surface, in all positions including scaffolding and curing etc.complete. I no 32.07

INTERNAL	2	18.32	6.25	= 229.00
Triangular portion	2	15.05	6.25	= 188.13
	4	15.70	2.55	= 80.07
Total =			497.20 Sgm.	

Deductions

Shutter	1	2.10	2.50	= 5.25
V1	7	0.60	0.60	= 1.51
V2	14	1.00	0.60	= 8.40
Total =			15.16 Sgm.	
Neta Total =			482.04 Sgm.	



MEASUREMENT SHEET.

Description	No.	L	B	D	QUANTITY
-------------	-----	---	---	---	----------

Item No. 21
 Providing sand faced plaster externally in cement mortar using approved screened sand, in all positions including base coat providing sand faced cement mortar 1:4 using waterproofing compound at 1kilogramper cement bag curing the same for not less than 2 days and keeping the surface of the base coat rough to receive the sand faced treatment 6 to 8 mm thick in cement mortar 1:4 finishing the surface by taking out grains and curing for fourteen days scaffolding etc.complete. 1 no

External	2	18.98			5.15 = 195.49
Angular portion	2	15.70			5.15 = 161.71
Angular portion	2	15.70			3.75 = 58.88
Angular portion	4	8.25			0.30 = 9.90
Total =					425.98 Sqm.

Item No. 22
 Providing and applying two coats of lead/zinc base oil paint/ bituminous paint of approved colour to new structural steel work and iron work in buildings including scaffolding if necessary, cleaning and repairing the surface etc. complete. (excluding primer coat). 1 no 35.04

Paint	1	2.10			2.50 = 5.25
Paint	7	0.60	#		0.60 = 1.51
Paint	14	1.00			0.60 = 8.40
Total =					15.16 Sqm.
Total =					410.82 Sqm.

Item No. 23
 Providing and applying priming coat on concrete/ masonry/ Asbestos Cement plastered surfaces including scaffolding if necessary, preparing the surface by thoroughly cleaning oil, grease, dirt and other foreign matter and sand papering as required etc. complete. 1 no 35.21

Priming	1	2.10			2.50 = 5.25
Priming	7	0.60	#		0.60 = 1.51
Priming	14	1.00			0.60 = 8.40
Total =					15.16 Sqm.
Total =					892.855 Sqm.

Item No. 24
 Providing and applying plastic emulsion paint of approved quality, colour and shade to old and new surfaces in two coats including scaffolding, preparing the surface (excluding the primer coat)etc. complete. 1 no 36.12

Paint	1	2.10			2.50 = 5.25
Paint	7	0.60	#		0.60 = 1.51
Paint	14	1.00			0.60 = 8.40
Total =					15.16 Sqm.
Total =					892.855 Sqm.

Item No. 25
 Providing and Fixing Turbo Ventilator of dia 24"SSR page no.374 item no.42

Turbo Ventilator	1	6.00			= 6.00 nos
------------------	---	------	--	--	------------

Item No. 26
 Providing and fixing board displaying information, such as 'Name of work, Tender cost, Name of Contractor, Work completion and liability period etc', having rectangular shape of 1.20m x 0.90m size made out 18 gauge (1.25mm) thick mild steel sheet painted with one coat of Zinc chromate stoving primer and two coats of enamel paint on front side and grey stove enamel on back side and border / messages / symbols etc. with approved colour shade paint complete, on M.S. angle of size 5 x 35 x 3 mm frame with properly cross braced M.S. angles of size 35mmx35mmx3mm duly painted including Two M.S. angle iron posts of size 65 mm x 65 mm x 6 mm, 3.65 m long painted with alternate black and white bands of 25 cm width

Board	1	6.00			= 6.00 nos
Total =					1.00 NOS

(Signature)

Dr. Kadam Arun V.
 Consulting Engineer
 P.M.C, Parbhani.
 Reg No. DDMC/R/2021/APL/00247

**Name of work: Construction of Godown for Poul Agro Producer Company Limited at
Parbhani Tq. Palam Dist. Parbhani**

RATE ANALYSIS.

Sr. No.	Description of Item	QTY.	NET LEAD CHARGES	RATE
1	Excavation for foundation in earth, soil of all types, sand, gravel and soft murum, including removing the excavated material up to a distance of 50 m. beyond the building area and stacking and spreading as directed, dewatering, preparing the bed for the foundation and necessary back filling, ramming, watering including shoring and strutting etc. complete. (Lift upto 1.5 m.) By Mechanical Means I no 21.02 BASIC RATE AS PER SSR 21-22			193.00 /Cu.M. TOTAL RATE Rs. 193.00 /Cu.M.
2	Excavation for foundation in earth, soils of all types, sand, gravel and soft murum, including removing the excavated material upto a distance of 50 metres beyond the building area and stacking and spreading as directed, dewatering, preparing the bed for the foundation and necessary back filling, ramming, watering including shoring and strutting etc. complete. (Lift from 1.5m to 3.0m) By Mechanical Means I no 21.04 BASIC RATE AS PER SSR 21-22			241.00 /Cu.M. TOTAL RATE Rs. 241.00 /Cu.M.
3	Providing and filling in the foundation with sand of approved quality including watering, compacting etc. complete. (To be executed with prior approval of Superintending Engineer) I no 21.39			
	BASIC RATE AS PER SSR 21-22	1.00	299.83	2172.00 /Cu.M.
	Add lead charges for Sand	1.00	-237.37	299.83 /Cu.M.
	Deduct for Royalty charges of sand			-237.37 /Cu.M.
	TOTAL RATE Rs. 2234.46 /Cu.M.			
4	Providing dry/ trap/ granite/ quartzite/ gneiss rubble stone soling 15 cm to 20 cm thick including hand packing and compacting etc. complete) I no 21.38			
	BASIC RATE AS PER SSR 21-22	1.00	516.75	1294.00 /Cu.M.
	Add lead charges for Soling			516.75 /Cu.M.
	TOTAL RATE Rs. 1810.75 /Cu.M.			
5	Providing and laying Cast in situ/Ready Mix cement concrete in M-10 of trap/ granite/ quartzite/ gneiss metal for foundation and bedding including bailing out water, formwork, laying/pumping, compacting, roughening them if special finish is to be provided, finishing if required and curing complete, with fully automatic micro processor based PLC with SCADA enabled reversible Drum Type mixer/concrete Batch mix plant (Pan mixer) etc. complete. With natural sand/V.S.I. quality Artificial Sand I no 24.01			
	BASIC RATE AS PER SSR 21-22			5538.00 /Cu.M.
	Less for SCADA			-120.00 /Cu.M.
	Add lead charges for 40 MM METAL	0.85	404.79	344.07 /Cu.M.
	Add lead charges for 20MM METAL	0.85	422.39	359.03 /Cu.M.
	Add lead charges for Sand	0.470	299.83	140.92 /Cu.M.
	Add lead charges for Cement	0.22	187.27	41.20 /Cu.M.
	Deduct for Royalty charges of sand	-0.470	237.37	-111.56 /Cu.M.
	TOTAL RATE Rs. 6191.66 /Cu.M.			



RATE ANALYSIS.

Description of Item	QTY.	NET LEAD CHARGES	RATE
Providing and laying in situ cement concrete M-30 with tremix treatment for 200 mm thickness for Concrete Road is including laying plastic sheet for 125 micron thickness with groove cutting of 4 mm wide and 20 mm deep with necessary refilling with kummen (excluding reinforcement) with coarse and fine aggregate (natural sand/ VSI grade finely washed crushed sand) etc. complete I no 5.22			
BASIC RATE AS PER SSR 21-22			7706.00 /Cu.M.
Less for SCADA			-120.00 /Cu.M.
Add lead charges for 20MM+10MM metal	0.85	422.39	359.03 /Cu.M.
Add lead charges for Sand	0.425	299.83	127.43 /Cu.M.
Add lead charges for Cement	0.40	187.27	74.91 /Cu.M.
Deduct for Royalty charges of sand	-0.425	237.37	-100.88 /Cu.M.
TOTAL RATE Rs.			8046.49 /Cu.M.
Providing and laying in situ/Ready Mix cement concrete M-20 of trap / granite /quartzite/ gneiss metal for R.C.C. work in foundations like raft, strip foundations, grillage and footings of R.C.C. columns and steel stanchions etc. including bailing out water, formwork, laying/pumping cover blocks, compaction and curing roughening the surface if special finish is to be provided (Excluding reinforcement and structural steel) etc. complete, with fully automatic micro processor based PLC with SCADA enabled reversible Drum Type mixer/ concrete Batch mix plant (Pan mixer) etc. complete. With natural sand/V.S.I. quality Artificial Sand I no 25.11			
BASIC RATE AS PER SSR 21-22			6666.00 /Cu.M.
Less for SCADA			-120.00 /Cu.M.
Add lead charges for metal	0.85	422.39	359.03 /Cu.M.
Add lead charges for Sand	0.425	299.83	127.43 /Cu.M.
Add lead charges for Cement	0.35	187.27	65.54 /Cu.M.
Deduct for Royalty charges of sand	0.425	-237.37	-100.88 /Cu.M.
TOTAL RATE Rs.			6997.12 /Cu.M.
Providing and laying Cast in situ/Ready Mix cement concrete M-20 of trap / granite /quartzite/ gneiss metal for R.C.C. columns as per detailed designs and drawing or as directed including centering, formwork, cover blocks, laying/pumping, compaction finishing the formed surfaces with cement mortar 1:3 of sufficient minimum thickness to give a smooth and even surface or roughening if special finish is to be provided and curing etc. complete.(Excluding reinforcement and structural steel).with fully automatic micro processor based PLC with SCADA enabled reversible Drum Type mixer/ concrete Batch mix plant (Pan mixer) etc. complete. With natural sand/V.S.I. quality Artificial Sand I no 25.31			
BASIC RATE AS PER SSR 21-22			12987.00 /Cu.M.
Less for SCADA			-120.00 /Cu.M.
Add lead charges for metal	0.90	422.39	380.15 /Cu.M.
Add lead charges for Sand	0.425	299.83	127.43 /Cu.M.
Add lead charges for Cement	0.35	187.27	65.54 /Cu.M.
Deduct for Royalty charges of sand	0.425	-237.37	-100.88 /Cu.M.
TOTAL RATE Rs.			13339.24 /Cu.M.
Providing and laying Cast in situ/Ready Mix cement concrete M-20 of trap / granite /quartzite/ gneiss metal for R.C.C. beams and lintels as per detailed designs and drawings or as directed including centering, formwork, cover blocks, laying/pumping, compaction and roughening the surface if special finish is to be provided and curing etc. complete. (Excluding reinforcement and structural steel). with fully automatic micro processor based PLC with SCADA enabled reversible Drum Type mixer/ concrete Batch mix plant (Pan mixer) etc. complete. With natural sand/V.S.I. quality Artificial Sand I no 25.5			
BASIC RATE AS PER SSR 21-22			11483.00 /Cu.M.
Less for SCADA			-120.00 /Cu.M.
Add lead charges for metal	0.85	422.39	359.03 /Cu.M.
Add lead charges for Sand	0.425	299.83	127.43 /Cu.M.
Add lead charges for Cement	0.35	187.27	65.54 /Cu.M.
Deduct for Royalty charges of sand	0.425	-237.37	-100.88 /Cu.M.
TOTAL RATE Rs.			11814.12 /Cu.M.




RATE ANALYSIS.

Description of Item	QTY.	NET LEAD CHARGES	RATE
Providing and laying Cast in situ/Ready Mix cement concrete M-20 of trap/ granite / quartzite/ gneiss metal for R.C.C. slabs and landings as per detailed designs and drawings including centering, formwork, cover blocks, laying/pumping, compaction/finishing if special finish is to be provided and curing etc. complete, (fixing minimum thickness to give a smooth and even surface or roughening if special processor based P.L.C with SCADA enabled reversible Drum Type mixer/ concrete Batch mix steel) with fully automatic micro processor based P.L.C with SCADA enabled reversible Drum Type mixer/ concrete Batch mix plant (Pan mixer) etc. complete. With natural sand/V.S.I. quality Artificial Sand I no 25.7			
BASIC RATE AS PER SSR 21-22			13943.00 /Cu.M.
Less for SCADA			-120.00 /Cu.M.
Add lead charges for metal	0.85	422.39	359.03 /Cu.M.
Add lead charges for Sand	0.425	299.83	127.43 /Cu.M.
Add lead charges for Cement	0.35	187.27	65.54 /Cu.M.
Deduct for Royalty charges of sand	0.425	-237.37	-100.88 /Cu.M.
TOTAL RATE Rs.			14274.12 /Cu.M.
Filling in plinth and floors with contractors material/brought from outside and approved by Engineer incharge in layers of 15 cm to 20 cm including watering and compaction etc. complete. I no 21.37			
BASIC RATE AS PER SSR 21-22			550.00 /Cu.M.
Add lead charges for Murum	1.00	220.06	220.06 /Cu.M.
TOTAL RATE Rs.			770.06 /Cu.M.
Providing second class Burnt Brick masonry with conventional/ I.S. type bricks in cement mortar 1:6 in foundations and plinth of inner walls/ in plinth external walls including bailing out water manually , striking joints on unexposed faces, raking out joints on exposed faces and watering etc. Complete. I no 27.01			
BASIC RATE AS PER SSR 21-22			7343.00 /SqM
Add lead charges for Brick	1.00	603.12	603.12 /SqM
Add lead charges for Sand	0.032	299.83	9.59 /SqM
Add lead charges for Cement	0.07900	187.27	14.79 /SqM
Deduct for Royalty charges of sand	0.320	-237.37	-75.96 /SqM
TOTAL RATE Rs.			7894.54 /SqM
Providing second class Burnt Brick masonry with conventional/ I.S. type bricks in cement mortar 1:6 in superstructure including striking joints, raking out joints, watering and scaffolding etc. Complete I no 27.05			
BASIC RATE AS PER SSR 21-22			7570.00 /Cu.M.
Add lead charges for Brick	1.000	603.12	603.12 /Cu.M.
Add lead charges for Sand	0.320	299.83	95.95 /Cu.M.
Add lead charges for Cement	0.079	187.27	14.79 /Cu.M.
Deduct for Royalty charges of sand	0.320	-237.37	-75.96 /Cu.M.
TOTAL RATE Rs.			8207.90 /Cu.M.
Providing and fixing in position TMT - FE - 500 bar reinforcement of various diameters for R.C.C. pile caps, footings, foundations, slabs, beams columns, canopies, staircase, newels, chajjas, lintels pardis, copings, fins, arches etc. as per detailed designs, drawings and schedules. including cutting, bending, hooking the bars, binding with wires or tack welding and supporting as required complete. I no 26.33			
BASIC RATE AS PER SSR 21-22			71778.00 /M.T.
Add lead charges for Steel	1.00	187.27	187.27 /M.T.
TOTAL RATE Rs.			71965.27 /M.T.
Providing and fixing rolling shutter fabricated from steel laths of minimum thickness 0.9 mm with lock plate of 3.15 mm thickness reinforced with 35 x 35 x 5 mm angle section fitted with sliding bolts and handles for both sides, deep M.S. channel section of depth and thickness not less than 65 mm and 3.15 mm respectively with hold fast arrangements. M.S. Bracket plate 300 x 300 x 3.15 mm minimum size and shape with square bar, suspension shaft of minimum 32 mm diameter, hood cover of M.S. sheet not less than 0.9 mm thickness and of any size at top and safety devices including mechanical gear operation arrangement consisting of worm gear wheels and worms of high grade cast iron or mild steel and one coat of red lead primer etc. complete (I.S. 6248(1979) (Without mechanical gear). I no 39.24			
BASIC RATE AS PER SSR 21-22			4310.00 /Sq.M.
TOTAL RATE Rs.			4310.00 /Sq.M.

RATE ANALYSIS.

Description of Item	QTY.	NET LEAD CHARGES	RATE
Providing and applying two coats of lead/zinc base oil paint/ bituminous paint of approved colour to new structural steel work and iron work in buildings including scaffolding if necessary, cleaning and repairing the surface etc. complete. (excluding primer coat). 1 no 35.04 BASIC RATE AS PER SSR 21-22			85.00 /Sq.M.
TOTAL RATE Rs.			85.00 /Sq.M.
Providing and applying priming coat on concrete/ masonry/ Asbestos Cement plastered surfaces including scaffolding if necessary, preparing the surface by thoroughly cleaning oil, grease, dirt and other foreign matter and sand papering as required etc. complete.). 1 no 35.21 BASIC RATE AS PER SSR 21-22			34.00 /Sq.M.
TOTAL RATE Rs.			34.00 /Sq.M.
Providing and applying plastic emulsion paint of approved quality, colour and shade to old and new surfaces in two coats including scaffolding, preparing the surface. (excluding the primer coat)etc. complete.). 1 no 36.12 BASIC RATE AS PER SSR 21-22			70.00 /Sq.M.
TOTAL RATE Rs.			70.00 /Sq.M.
Providing and fixing Turbo Ventilator of dia 24"SSR page no.374 Item no.42 BASIC RATE AS PER SSR 21-22 add 20% Fixing & Labour Charges			8680.00 /NOS 1736.00
TOTAL RATE Rs.			10416.00 /NOS
Providing and fixing board displaying information, such as 'Name of work, Tender cost, Name of Contractor, Work completion and liability period etc', having rectangular shape of 1.20m x 0.90m size made out 18 gauge (1.25mm) thick mild steel sheet painted with one coat of Zinc chromate stoving primer and two coats of enamel paint on front side and grey stove enamel on back side and border / messages / symbols etc. with approved colour shade paint complete. on M.S.angle of size 35 x 35 x 3 mm frame with properly cross braced M.S. angles of size 35mmx35mmx3mm duly painted including Two M.S. angle iron posts of size 65 mm x 65 mm x 6 mm, 3.65 m long painted with alternate black and white bands of 25 cm width including all fixtures etc and fixing the boards in 1:4:8 concrete block of size 60 cm x 60 cm x 75 cm including, excavation, refilling, transportation, and labour etc complete. Spec. No. As directed by Engineer in Charge.). 1 no 6.36 BASIC RATE AS PER SSR 21-22			9284.00 /Nos
TOTAL RATE Rs.			9284.00 /Nos


Kadam Arun V.
 Consulting Engineer
 PMC, Parbhani.
 Reg No DDMC/R/2021/APL/002A7

Name of work: Construction of Godown for Poul Agro
Producer Company Limited at Farkanda Tq. Palam
Dist.Parbhani

LEAD CHART

SR NO	MATERIAL	LOCATION OF QUARRY	LEAD IN KM	NET LEAD CHARGES
1	2	3	4	7
1	SOLING	KHADALA	20.00	516.75
2	METAL 40MM SIZE. ABOVE NORMAL	KHADALA	20.00	404.79
3	METAL 40MM SIZE. BELOW NORMAL	KHADALA	20.00	422.39
4	SAND	MITHAPUR	10.00	299.83
5	CEMENT/STEEL.	PALAM	10.00	187.27
6	TILES	PALAM	10.00	527.88
7	H.M.	Local	5.00	220.06
8	BRICKS	PALAM	8.00	603.12

Kadam

Dr. Kadam Arun V.
Consulting Engineer

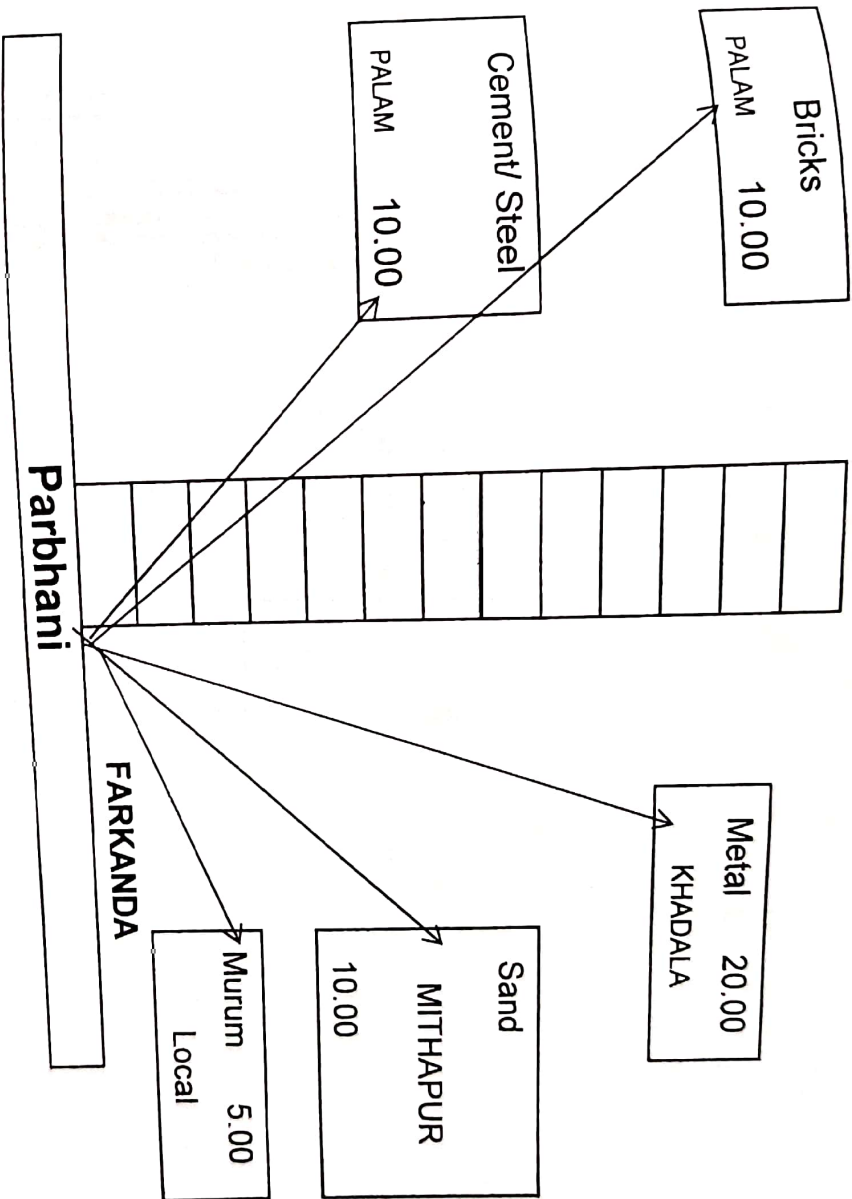
PMC, Parbhani,
Dist. Parbhani.

Reg. No. DDMC/R/2021/APL/00247



Name of work: Construction of Godown for Poul Agro Producer Company
Limited at Farkanda Tq. Palam Dist. Parbhani

QUARRY CHART



- 1) Certified that the quarries of various material as shown on chart above have been inspected by me and the material of **requisite grade, specification are presently available in sufficient quantities** required for the work
- 2) Certified that the quarries of required material are located at **minimum distance** from the work site and No other quarries are present at a distance lesser than the lead shown on quarry chart.
- 3) Certified that the distances shown on the map are **correct, minimum and personally verified** by me by travelling over **minimum distance** path.

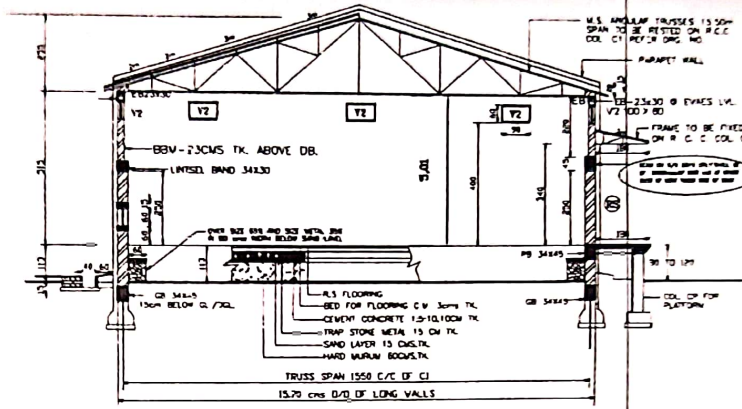
(Signature)

Er. Kadam Arun V.
Consulting Engineer

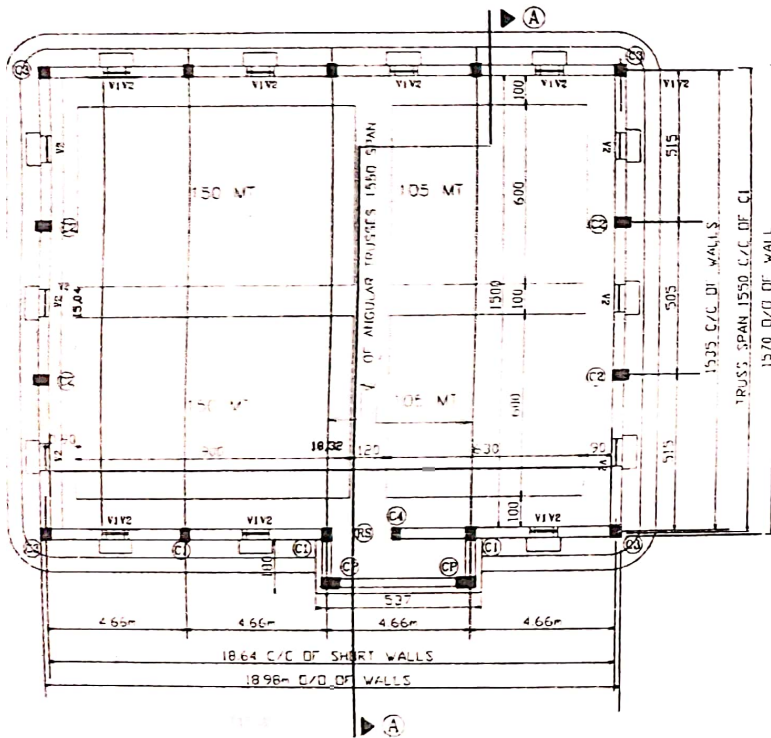
PMC, Parbhani.
Reg. No. DDMC/R/2021/APL/00247



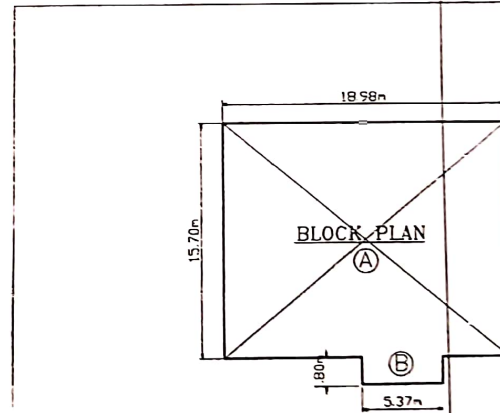
ELEVATION



SECTION 'A-A'



PLAN FOR (510 MT) WH. BLDG.



BLOCK PLAN

SCHEDULE OF R. C. C. COLUMNS.

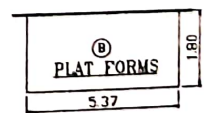
TYPE	SIZE	NO.	REMARKS
C1	30 x 45	6	LONG WALLS
C2	30 x 45	4	CABLE WALLS
C3	34 x 34	4	CABLE WALLS
C4	15 x 34	1	TO BE POSTED ON DB & RS PANELS
CP	57 x 30	1	FOR PLATFORMS BELOW BEAM

SCHEDULE OF ROLLING SHUTTERS/VENTILATORS

TYPE	SIZE (IN CM)	NO.	DISCUSSION
RS	180 x 240	1	PULL AND PUSH TYPE FIXED FROM INSIDE
V1	60 x 60	7	STEEL VENTILATORS FULLY SLATED WITH SHUTTERBOX HINGED BY 30 MESH 18 SWG TO BE FIXED BY ANCHORING W.S. PLAT & 12mm SQ BARS IN VERTICAL POSITION & 12mm C/C FIXED TO FRAME FROM OUTSIDE
V2	100 x 60	14	12mm SQ BARS (11 NOS) IN VERTICAL POSITION & 10mm C/C FIXED TO FRAME FROM OUTSIDE

BUILT UP AREA CALCULATIONS

DESCRIPTION	AREA (SQ. M)
MAIN BUILDING	297.98
TOTAL PLATFORMS AREA	3.66
GROSS BUILT UP AREA	307.64 sq. m.



CONSTRUCTION OF GODDOWN FOR POLYE AGRO PRODUCER COMPANY LIMITED AT FARUKUNDA TO PALAM DIST. PARBHANI UNDER NANNABESHMERCH KRUSHI SANVANTPRAKALP

EXISTING 1/510 MT CAPACITY WH. BUILDING(S) UNIT NOS ON PLOT NO. WAREHOUSE COMPLEX AT-PEDGAON TO PALAM DIST. PARBHANI

Kadam
Kadam Arun V.
Consulting Engineer

PMC, Parbhani.
No. DD/MC/R/2021/APL/00